



#CompuTec  
**ProcessForce**

# **#CompuTec** **ProcessForce**

A comprehensive and reliable solution for advanced manufacturers that allows users to enjoy SAP Business One's excellence for key business functions combined with an extensive production functionalities

**Supply chain data management**

**Expanded product information**

**Manage even the most complex recipes and the most precise processes**

**Plan and analyze the entire production process**

**Multi-level quality control infrastructure**

**Complete audit trail**

**Comprehensive analytics and forecasting tools**

**Plan your enterprise's growth**

**Optimize operations and increase customer satisfaction**

**SAP** Business  
**One**

**SAP Industry Solution**  
Excellence Award

**SAP Global Solution Partner**  
Leadership in Innovation Award

**SAP Certified**  
SAP Business One Integration

## OUR VERTICAL APPROACH

CompuTecProcessForce was designed in close consultation with industry leaders in the following verticals with careful consideration of their day-to-day operational needs and the challenges their specific industry presents.



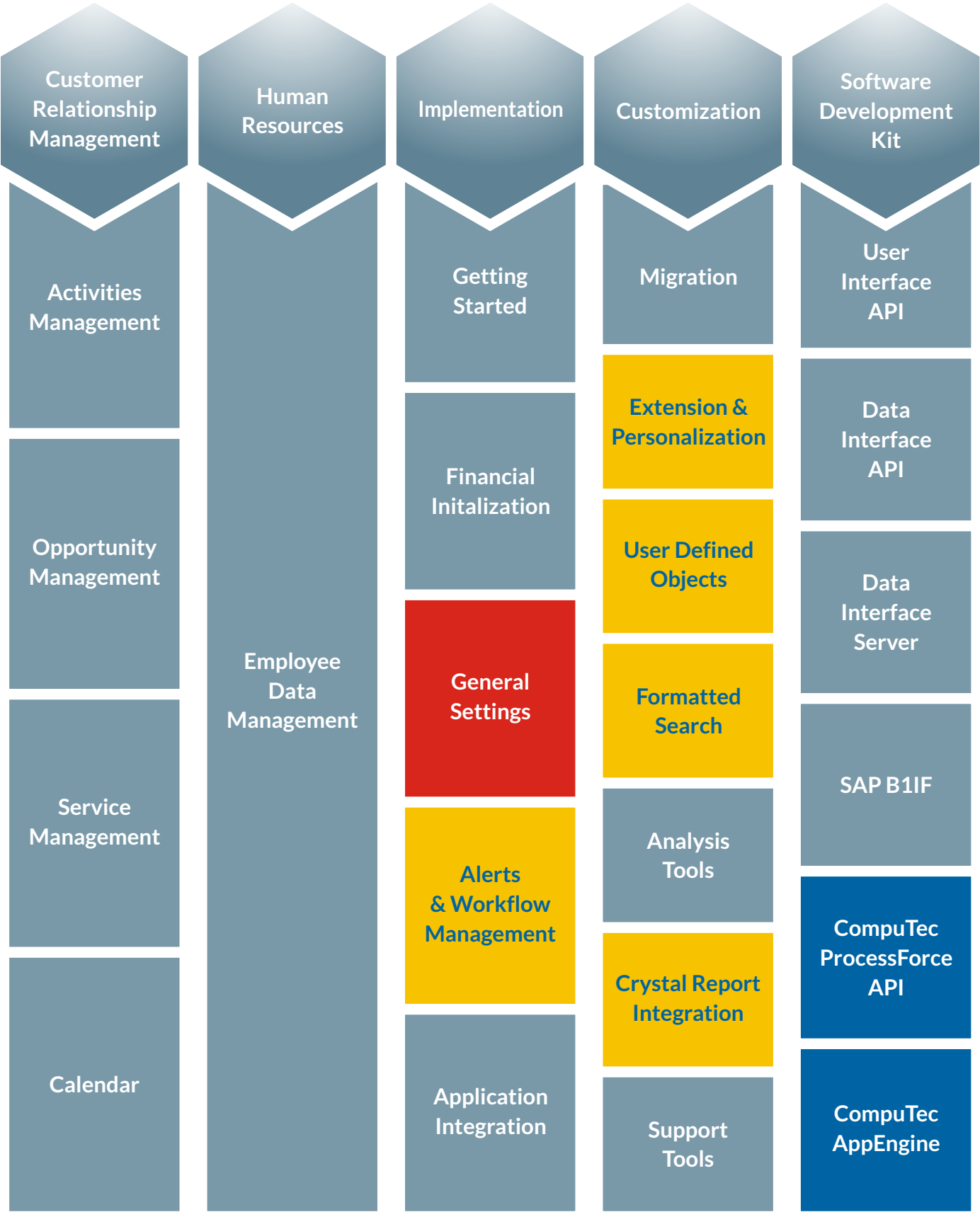
## COMPUTEC PROCESSFORCE FOR SAP BUSINESS ONE

- ✓ Works as an integral part of SAP Business One on-premise or in the cloud
- ✓ Available in 27 languages
- ✓ Consolidates all your data about customers, products, suppliers, resources, inventory and processes into one single database ensuring enterprise-wide data accuracy and consistency
- ✓ Eliminates the need to use multiple spreadsheets, accounting software, bespoke software etc.
- ✓ Full auditability of processes and inventory even at a moment's notice
- ✓ Flexible enough to implement change rapidly even in dynamic industries
- ✓ Extensive customization options so you can continue to do business in the way you know works for your company
- ✓ Reduces time spent on manual processes and record-keeping
- ✓ Facilitates on-time delivery and minimize unplanned downtime and outages
- ✓ Minimizes the potential for human error
- ✓ Operates in real-time
- ✓ Insight into where you are running efficiently and where there is room for improvement
- ✓ Fully scalable to up to 500 concurrent users to support your organization's growth
- ✓ Streamlined workflow, data transparency and planning tools mean you can process a larger, more complex orders and fulfill your business's potential while reducing risk

# COMPUTEC PROCESSFORCE SOLUTION MAP



The combined SAP Business One and CompuTec ProcessForce solution map provides a visualization of the application components, vertical extensions and tool utilization.



- CompuTec ProcessForce adds new processes, functions and reports
- CompuTec ProcessForce uses existing SAP Business One processes, functions and reports, but extended the functionality
- CompuTec ProcessForce uses existing SAP Business One tools to implement and customise CompuTec ProcessForce objects

# PRODUCT DATA MANAGEMENT

With more regulation and increasing customer demands for transparency, it is more important to know exactly what is going into your products than ever before and the sheer volume of data involved can quickly become overwhelming. CompuTec ProcessForce records your data logically and accurately and treats it as a strategic asset. Big data will no longer be a big problem. It will be a big advantage.

- Increase visibility and access relevant data quickly and easily
- Be confident in the integrity of your data and in satisfying regulatory and customer product safety requirements
- Improve supply chain management
- Optimize productivity, resource usage and cycle times
- Facilitate cooperation between teams and departments by ensuring data consistency from a single information repository
- Speed up strategic decision-making backed by analytics and data-driven insights

#	Property Code	Property Name	Expression	Range From	Range To	Unit	Reference Code	Reference Name
1	01	Vapour Density	Equal	3.380	0.000	kg/m³		
2	02	Specific Gravity @25degC	Equal	1.840	0.000			
3	03	Solubility in Water	Equal	0.000	0.000			
4	04	Vapour Pressure	Less than	0.001	0.000	mm Hg @200	04	Yes
5	05	Odor	Between	0.000	0.000		07	Odorless
6	06	Appearance	Equal	0.000	0.000		08	Off
7	07	Colour	Not equal	0.000	0.000		03	Yellow
8	08	Melting Point	Greater than	10.000	0.000	degC		
9	09	Boiling Point	Greater than or equal	200.000	0.000	degC		
10	10	pH	Less than	0.300	0.000	pH		
11			Less than or equal	0.000	0.000			

Date Details	Properties	Attachments	Quality Control	Returns	Inventory	Complaints
Admission	03.08.17				Warning Date Prior Expiry	
Vendor Manufacturing Date	04.08.17				Warning Date Prior Consume	
Expiry Date	30.06.19					
Expiry Time	00:00					
Best Before Date	30.06.19					
Consume by Date						
Last Inspection Date						
Inspection Date						
Next Inspection Date						

## COMPREHENSIVE INGREDIENT, COMPONENT AND PRODUCT DATA

Batch Management	Allocate and manage rules such as expiry and consume by dates and manage shelf life
Storage Rules	Manage stock on a FIFO, FEFO or FMFO basis and maintain the right stock levels for your business
Batch and Serial Numbers	Fully-customizable using pre-defined defaults, templates or manual data input
Ingredient Declarations	For each product and each product revision
Nutrients	Define and manage daily intake recommendations, including on a country by country basis
Country of Origin	Identify the origins of each component part of the finished product quickly and easily
Allergens	Trace allergens and set up allergen alerts and warnings
Pack Serving Sizes	Manage product portions and package volumes
Classifications	Categorize products, e.g. toxic and non-toxic
Properties	Define physical and chemical characteristics and designate properties for quality control tests
Product Groups	Categorize your inventory, set up sub groups and assign codes to ensure optimum safety practices

- Support standardization
- Allocate alternative parts and ingredients when lack of availability demands
- Establish a preferred parts/ingredients list
- Set standard descriptive texts for example hazard instructions, safety text and cleaning information in case of a product spillage

*Now, when we take data from our system,  
we can actually rely on it.*

*James Obeng  
HPW Fresh & Dry Ltd., Ghana*

## MATERIAL SAFETY DATA SHEET (MSDS)

Several regulatory bodies, including the European Union, use set phrases to list information relating to occupational safety and health, special transportation or storage arrangements and potential hazards when working with certain products and substances. By supporting these phrases, CompuTec ProcessForce completely automates the creation of Material Safety Data Sheets so that reassuring your customers of product compliance is quick and painless.



# BILL OF MATERIALS

A detailed and precise Bill of Materials (BoM) is crucial to saving time and avoiding mistakes. CompuTec ProcessForce's expanded BoM will help you to eliminate inefficiencies, material planning issues and the associated costs of these blunders.

- Strategize purchasing and make better material planning decisions
- Optimize cost effectiveness
- Share comprehensive data in real-time to ensure consistency, accuracy and quality across your departments and product range
- Ensure timely product delivery
- Improve planning, increase production volume and grow your business

*Our business processes are a lot more autonomous, month end is processed easily and accurately, we have better clarity with what is happening in the business and we can track our inventory with more precision.*

**Bob Zhou,**

**Australian Dairy Park, Australia**

## Formula and Recipe Management

- Full formula and recipe scalability
- Percentage weight based recipes
- Yield planning and analysis
- Handle multiple units of measure within one recipe
- Choose how items are managed

## Making Complexity Simple

Designed to handle the most complex production processes, CompuTec ProcessForce allows you to drill down through each level of production, even when your final product contains dozens of sub-assemblies which each contain dozens of sub-assemblies and phantom items.

- Unlimited simultaneous product revisions
- Multi-level Bill of Materials
- Set up phantom items for better production planning
- Enforce rules for each stage
- Embed quality control tests and special manufacturing instructions
- Integrate work by subcontractors into your system
- Attach instructions, certifications and quality control procedures to each BoM to make sure your business stays compliant
- Mass item replace function
- Generate reports

Bill of Materials

Item Code

strawberry jam 200ml

Type

Internal

Description

strawberry jam 200ml

Revision

200ml

Quantity

1,000

Total

1,000

Factor

1,000

Yield

100.000

Warehouse

01

Distribution Rules

Project

MRP Def.

Batch Size

1,000

UoM Formula

Items		Coproducts		Scrap		Instructions		W/P Items		Attachments								
#	Sequence	Item Code	Description	Revision	Warehouse	UoM	Revision De...	Factor	Formula	Quantity	Scrap %	Yield	Result	Type	Subcontracting ...	Issue Type	Dimension 2	Batch Result
1	10	FD cap twist-off	FD cap twist-off	code00	01		default	1.000	=U_Quantity()*U_Factor()*Items.U_Factor(10)*Items.U_Quantity(10)*100/(100	1.000	0.000	100.000	1.000	Buy	<input type="checkbox"/>	Backflush		1.000
2	20	FD jar 240ml	FD jar 240ml	code00	01		default	1.000	=U_Quantity()*U_Factor()*Items.U_Factor(20)*Items.U_Quantity(20)*100/(100	1.000	0.000	100.000	1.000	Buy	<input type="checkbox"/>	Backflush		1.000
3	30	FD lemon acid	FD lemon acid	code00	01		default	1.000	=U_Quantity()*U_Factor()*Items.U_Factor(30)*Items.U_Quantity(30)*100/(100	0.034	0.000	100.000	0.034	Buy	<input type="checkbox"/>	Backflush		0.034
4	40	FD pectin	FD pectin	code00	01		default	1.000	=U_Quantity()*U_Factor()*Items.U_Factor(40)*Items.U_Quantity(40)*100/(100	0.055	0.000	100.000	0.055	Buy	<input type="checkbox"/>	Manual		0.055
5	50	FD sorbate	FD sorbate	code00	01		default	1.000	=U_Quantity()*U_Factor()*Items.U_Factor(50)*Items.U_Quantity(50)*100/(100	0.079	0.000	100.000	0.079	Buy	<input type="checkbox"/>	Manual		0.079
6	60	FD Strawberry	FD Strawberry	code00	01		default	1.000	=U_Quantity()*U_Factor()*Items.U_Factor(60)*Items.U_Quantity(60)*100/(100	0.500	0.000	100.000	0.500	Buy	<input type="checkbox"/>	Manual		0.500
7	70	Super	Sugar	code00	01	KG	default	1.000	=U_Quantity()*U_Factor()*Items.U_Factor(70)*Items.U_Quantity(70)*100/(100	0.140	0.000	100.000	0.140	Buy	<input type="checkbox"/>	Manual		0.140
8	80	Water	Water	code00	01	LT	default	1.000	=U_Quantity()*U_Factor()*Items.U_Factor(80)*Items.U_Quantity(80)*100/(100	0.090	0.000	100.000	0.090	Buy	<input type="checkbox"/>	Manual		0.090
9	90	Label-01	Label-01	code00	01	EA	default	1.000	=U_Quantity()*U_Factor()*Items.U_Factor(90)*Items.U_Quantity(90)*100/(100	1.000	0.000	100.000	1.000	Buy	<input type="checkbox"/>	Backflush		1.000
10	0							0.000		0.000	0.000	100.000	0.000		<input type="checkbox"/>			0.000

Remarks

OK

Cancel

You Can Also



## Product Routings

CompuTec ProcessForce lets you assign routings to production items and bind specific items to each operation helping you to determine the best machines and equipment for each process and allowing you to consider the unique characteristics of each product revision in organizing workflow.

- Set up unlimited routings using a wide range of machinery and technology
- Assign alternative routings for when capacity is under strain
- Save time and reduce costs by setting up reusable sequences
- Make sure materials end up where they are needed exactly when they are needed

## Co-product, by-product, WIP items and scrap management

- Avoid unnecessary waste
- Maximize what you can re-use
- See new opportunities for profit

## Costed Bill of Materials (BoM)

- Ease the process of determining product costs
- Compare costs of different revisions
- Cost categories allow you to see how future costing changes will affect your business

Costed Bill of Materials																									
Item Code		Boethanol		Cost Category		Standard cost		TC Material		0.975		1.518 %													
Item Name		Boethanol						TC Resources		39.783		93.096 %													
Revision		70						TC Fixed O/H		0.000		5.308 %													
Warehouse		General Warehouse						TC Variable O/H		0.000		0.000 %													
Batch Size		1,000						TC Total		64.225															
Routing		Fuel tat						CC Batch Size		1,000															
#		Item Code	Item Name	Revision	Warehouse	Quantity	ATL Material	ATL Resources	ATL Fixed O/H	ATL Variable O/H	ATL Total	LL Material	LL Resources	LL Total	CA Material	CA Resources	CA Total	TC Material	TC Resources	TC Variable O/H	TC Total				
1	Good	Boethanol	Boethanol	code00	01	1,000	0.975	59.783	3.467	0.000	64.225	0.000	0.000	0.000	0.000	0.000	0.000	0.975	59.783	0.000	64.225				
2	Material	Sugar Cane	Sugar Cane	code00	01	4,800	0.000	0.000	0.000	0.000	0.000	0.000	0.000	0.000	0.000	0.000	0.000	0.000	0.000	0.000	0.000				
3	Material	Active-Item-03	Active-Item-03	code00	01	0.140	0.420	0.000	0.000	0.000	0.420	0.000	0.000	0.000	0.000	0.000	0.000	0.420	0.000	0.000	0.420				
4	Material	Active-Item-05	Active-Item-05	rev01	01	0.555	0.555	0.000	0.000	0.000	0.555	0.000	0.000	0.000	0.000	0.000	0.000	0.555	0.000	0.000	0.555				
5	Material	Active-Item-06	Active-Item-06	code00	01	0.822	0.000	0.000	0.000	0.000	0.000	0.000	0.000	0.000	0.000	0.000	0.000	0.000	0.000	0.000	0.000				
6	Subcat	Liquid CO2	Liquid CO2	code00	01	0.120										0.000	0.000	0.000							
7		Item-A	Item-A	code00	01	0.090										0.000	0.000	0.000							
8	Ing	Fuel tat	Fuel tat				14.783	3.517	0.590								0.000								
9	ation	grinding	grinding				2.063	0.010	0.100																
10	urce	OS	Labour				1.000	0.010	0.100																
11	h						0.000	0.000	0.000																
12	h						0.000	0.000	0.000																
13	h						1.000	0.010	0.100																
14	h						0.000	0.000	0.000																
15	Juice	BE01	BE01				1.083	0.000	0.000																
16	h						0.000	0.000	0.000																
17	h						0.150	0.000	0.750																
18	h						0.050	0.000	0.250																
19	h						0.000	0.000	0.000																
20	ation	Fermentation	Fermentation				4.500	0.010	0.100																
21	Juice	BE02	BE02				3.500	0.000	0.000																
22	h						0.000	0.000	0.000																
23	h						0.100	0.000	0.500																
24	h						1.000	0.000	0.000																
25	h						0.000	0.000	0.000																
26	Juice	06	Labour				1.000	0.010	0.100																
27	h						0.000	0.000	0.000																
28	h						0.000	0.000	0.000																
29	h						1.000	0.010	0.100																
30	h						0.000	0.000	0.000																
31	ation	distillation	distillation				3.917	0.010	0.100																
32	Juice	BE03	BE03				2.517	0.000	0.000																
33	h						0.000	0.000	0.000																
34	h						0.250	0.000	0.000																
35	h						0.100	0.000	0.000																
OK		Cancel																		Refresh		Expand All		Collapse All	

# SCHEDULING

CompuTec ProcessForce's scheduling solution provides you with all the tools you need to manage time and resource limitations and ensure that the final products reach your customers on time.

- Allocate resources, tooling and labor according to:
  - Resource status and capacity
  - Time constraints
  - Overlapping processes
- Forwards and backwards production scheduling
- Set timings for each stage of production
- Manage your production calendar and calculate resource and production capacities with precision
- Manage Manufacturing Orders based on complex Multi-level Bills of Materials with ease
- Define alternative product routings when necessary
- Manage advanced relations between processes
- Record material consumption for all operations

## THE SCHEDULING BOARD

A simple but effective planning tool presented in table format.

- Manage production dates, scheduling methods, priorities, completion dates and more
- Straightforward data organization and management with advanced filtering options
- Oversee changes and see how they affect production scheduling
- View scheduling for all levels of multi-level Bills of Materials

## RESOURCE PLANNING BOARD

- Filter and sort Manufacturing Orders and review details of each one
- Manage resources and resource groups and the Manufacturing Orders associated with them
- Check resource capacity
- View and organize the jobs which are waiting for resources to become available
- Manage and assign tools to specific resources
- Receive alternative resource suggestions
- Easy to use drag and drop interface

## DYNAMIC GANTT CHART

- Easy to modify and reschedule tasks via drag and drop
- Extensive filtering and sorting options
- Intuitive interface e.g. color-coded work time display
- Monitor the details of each order
- Plan immediate and long-term future operations
- Display current status, relevant historical data and pending tasks for each resource
- Spread orders across multiple resources
- Identify overloaded assets and receive system recommendations about alternative resources
- Manage interruptions to the manufacturing process to facilitate continuous production
- Receive notifications of holdups due to material shortages
- "Lock" set tasks into designated time periods
- Block all Manufacturing Orders
- See the knock-on effects of changes to the Gantt Chart across your operations

## PLANNING USING RELATIONSHIPS

- Initiate work on Manufacturing Orders when you are sure all the pieces are in place
- Prioritize urgent or important orders
- Monitor the relationships between various stages of the production process
- Schedule Manufacturing Orders so they are completed according to customer agreements
- Identify scheduling conflicts immediately as they arise.

CompuTec ProcessForce will send users alerts and warning when production capacity is exceeded or delivery times cannot be met. The nearest possible delivery date will be calculated too.





Order	Level	Serial	Doc No.	Doc Entry	Item Code	Reason	Warehouse	Quantity	Ytd Stock	Direction	Priority	Schedule Date	Confirmed	Status	Start Date	Ordered	End Date	Absolute Time	Required Date	Routing	Delivery Date	Delivery
0	1885	17749	3413		strawberry jam 2000	00000001	01	100.000	867.000	Backward	1	21.06.17	26.160.000	Started	20.06.17 04:59	20.06.00	21.06.17 00:00	00:00		Foodgen	21.06.17	00:00
0	1885	17762	3420		strawberry jam 2000	00000001	01	80.000	867.000	Forward	1	14.06.17	26.160.000	Started	14.06.17 08:55	20.06.00	14.06.17 16:19	7:24:00		Foodgen	20.06.17	00:00
0	1885	17827	3536		strawberry jam 2000	00000001	01	200.000	867.000	Backward	1	20.06.17	26.160.000	Started	20.06.17 07:12	20.06.00	20.06.17 00:00	16:48:00		Foodgen	20.06.17	00:00
0	1885	17869	3615		strawberry jam 2000	00000001	01	100.000	867.000	Backward	1	31.10.17	26.160.000	Started	30.10.17 13:29	20.06.00	30.10.17 22:28	9:00:00		Foodgen	31.10.17	00:00
0	1885	17865	3600		strawberry jam 2000	00000001	01	75.000	867.000	Backward	1	09.11.17	26.160.000	Scheduled	31.10.17 23:45	20.06.00	09.11.17 00:00	19:21:40		Foodgen	09.11.17	00:00
0	1885	17876	3587		strawberry jam 2000	00000001	01	120.000	867.000	Backward	1	26.10.17	26.160.000	Scheduled	25.10.17 13:26	20.06.00	26.10.17 00:00	15:24:00		Foodgen	26.10.17	00:00
0	1885	17751	3417		strawberry jam 2000	00000001	01	55.000	867.000	Backward	1	20.06.17	26.160.000	Scheduled	20.06.17 18:28	20.06.00	20.06.17 00:00	53:31:00		Foodgen	20.06.17	00:00
0	1885	17753	3419		strawberry jam 2000	00000001	01	70.000	867.000	Backward	1	20.06.17	26.160.000	Scheduled	27.06.17 17:19	20.06.00	20.06.17 00:00	6:41:00		Foodgen	20.06.17	00:00
0	1885	17755	3421		strawberry jam 2000	00000001	01	110.000	867.000	Backward	1	20.06.17	26.160.000	Scheduled	28.06.17 11:59	20.06.00	20.06.17 00:00	0:47:00		Foodgen	20.06.17	00:00
0	1885	17757	3423		strawberry jam 2000	00000001	01	100.000	867.000	Backward	1	21.06.17	26.160.000	Scheduled	21.06.17 02:31	20.06.00	21.06.17 00:00	11:29:00		Foodgen	21.06.17	00:00
0	1885	17759	3425		strawberry jam 2000	00000001	01	230.000	867.000	Backward	1	27.06.17	26.160.000	Scheduled	23.06.17 21:05	20.06.00	27.06.17 00:00	7:54:00		Foodgen	27.06.17	00:00
0	1885	17761	3429		strawberry jam 2000	00000001	01	100.000	867.000	Backward	1	20.06.17	26.160.000	Scheduled	27.06.17 19:23	20.06.00	27.06.17 00:00	10:28:00		Foodgen	20.06.17	00:00
0	1885	17853	3517		strawberry jam 2000	00000001	01	100.000	867.000	Backward	1	20.06.17	26.160.000	Scheduled	20.06.17 14:29	20.06.00	20.06.17 00:00	0:01:00		Foodgen	21.06.17	00:00
0	1885	17858	3564		strawberry jam 2000	00000001	01	45.000	867.000	Backward	1	20.06.17	26.160.000	Scheduled	20.06.17 14:12	20.06.00	20.06.17 00:00	8:07:00		Foodgen	20.06.17	00:00
0	1885	17853	3524		strawberry jam 2000	00000001	01	120.000	867.000	Backward	1	20.06.17	26.160.000	Scheduled	18.06.17 13:26	20.06.00	18.06.17 23:59	10:34:00		Foodgen	21.06.17	00:00
0	1885	17867	3602		strawberry jam 2000	00000001	01	80.000	867.000	Backward	1	06.11.17	26.160.000	Scheduled	31.10.17 21:47	20.06.00	06.11.17 00:00	11:21:40		Foodgen	07.11.17	00:00
0	1885	18077	3554		strawberry jam 2000	00000001	01	80.000	867.000	Backward	1	20.06.17	26.160.000	Started	25.06.16 15:55	20.06.00	26.06.16 00:00	0:04:48		Foodgen	26.06.16	00:00
0	1885	17829	3538		strawberry jam 2000	00000001	01	150.000	867.000	Backward	1	22.06.17	26.160.000	Scheduled	21.06.17 11:05	20.06.00	22.06.17 00:00	12:35:00		Foodgen	22.06.17	00:00
0	1885	17841	3540		strawberry jam 2000	00000001	01	175.000	867.000	Backward	1	21.06.17	26.160.000	Scheduled	20.06.17 15:09	20.06.00	20.06.17 19:49	14:44:00		Foodgen	21.06.17	00:00
0	1885	17843	3542		strawberry jam 2000	00000001	01	1.500.000	867.000	Backward	1	12.06.17	26.160.000	Scheduled	05.06.17 02:06	20.06.00	12.06.17 00:00	16:54:00		Foodgen	12.06.17	00:00
0	1885	17847	3546		strawberry jam 2000	00000001	01	750.000	867.000	Backward	1	21.06.17	26.160.000	Scheduled	20.06.17 09:45	20.06.00	20.06.17 17:33	11:52:00		Foodgen	21.06.17	00:00
0	1885	17849	3548		strawberry jam 2000	00000001	01	1.250.000	867.000	Backward	1	20.06.17	26.160.000	Scheduled	22.06.17 08:21	20.06.00	20.06.17 19:49	14:28:00		Foodgen	20.06.17	00:00
0	1885	17845	3544		strawberry jam 2000	00000001	01	600.000	867.000	Backward	1	21.06.17	26.160.000	Started	20.06.17 11:15	20.06.00	20.06.17 11:04	47:46:00		Foodgen	21.06.17	00:00
0	1885	17853	3554		strawberry jam 2000	00000001	01	100.000	867.000	Backward	1	20.06.17	26.160.000	Scheduled	20.06.17 09:50	20.06.00	20.06.17 05:03	19:10:00		Foodgen	20.06.17	00:00
0	1885	17855	3556		strawberry jam 2000	00000001	01	300.000	867.000	Forward	1	09.06.17	26.160.000	Released	09.06.17 08:49	20.06.00	21.06.17 08:44	20:54:00		Foodgen	21.06.17	00:00
0	1885	18085	3562		strawberry jam 2000	00000001	01	350.000	867.000	Backward	1	02.05.18	26.160.000	Scheduled	01.05.18 03:18	20.06.00	02.05.18 00:00	20:42:00		Foodgen	02.05.18	00:00
0	1885	17873	3581		strawberry jam 2000	00000001	01	100.000	867.000	Backward	1	20.06.17	26.160.000	Scheduled	25.06.17 16:41	20.06.00	20.06.17 03:23	0:24:00		Foodgen	21.06.17	00:00
0	1885	18121	3518		strawberry jam 2000	00000001	01	100.000	867.000	Backward	1	20.06.17	26.160.000	Scheduled	27.06.18 14:59	20.06.00	20.06.18 00:00	0:01:00		Foodgen	20.06.18	00:00
0	1885	17841	3540		strawberry jam 2000	00000001	01	100.000	867.000	Backward	1	20.06.17	26.160.000	Scheduled	18.11.17 14:39	20.06.00	20.11.17 00:00	00:01:00		Foodgen	20.11.17	00:00
0	1885	18116	3522		strawberry jam 2000	00000001	01	350.000	867.000	Backward	1	21.06.18	26.160.000	Started	19.06.18 19:32	20.06.00	21.06.18 00:00	28:27:00		Foodgen	21.06.18	00:00
0	1885	17869	3604		strawberry jam 2000	00000001	01	280.000	867.000	Backward	1	18.11.17	26.160.000	Scheduled	31.10.17 17:58	20.06.00	10.11.17 00:00	22:02:00		Foodgen	10.11.17	00:00
0	1885	17847	3540		strawberry jam 2000	00000001	01	40.000	867.000	Backward	1	31.10.17	26.160.000	Released	30.10.17 19:28	20.06.00	31.10.17 00:00	4:22:00		Foodgen	31.10.17	00:00
0	1885	17851	3530		strawberry jam 2000	00000001	01	5.500.000	867.000	Forward	1	09.11.17	26.160.000	Scheduled	11.11.17 00:52	20.06.00	24.11.17 22:00	57:13:32		Foodgen	31.08.17	00:00
0	1885	17881	3608		strawberry jam 2000	00000001	01	150.000	867.000	Backward	1	09.11.17	26.160.000	Scheduled	31.10.17 14:43	20.06.00	08.11.17 00:00	177:46:24		Foodgen	08.11.17	00:00
0	1885	17862	3600		strawberry jam 2000	00000001	01	75.000	867.000	Backward	1	09.11.17	26.160.000	Scheduled	31.10.17 12:37	20.06.00	15.11.17 21:14	30:36:48		Foodgen	08.11.17	00:00
0	1885	17865	3610		strawberry jam 2000	00000001	01	220.000	867.000	Backward	1	09.11.17	26.160.000	Scheduled	31.10.17 08:49	20.06.00	08.11.17 21:04	204:15:00		Foodgen	09.11.17	00:00
0	1885	17867	3612		strawberry jam 2000	00000001	01	150.000	867.000	Backward	1	18.11.17	26.160.000	Released	31.10.17 09:39	20.06.00	09.11.17 19:22	228:43:00		Foodgen	10.11.17	00:00
0	1885	17861	3606		strawberry jam 2000	00000001	01	100.000	867.000	Backward	1	31.10.17	26.160.000	Released	30.10.17 18:17	20.06.00	30.10.17 00:00	4:23:00		Foodgen	31.10.17	00:00
0	1885	17902	3621		strawberry jam 2000	00000001	01	20.000	867.000	Backward	1	20.11.17	26.160.000	Released	29.11.17 21:12	20.06.00	30.11.17 00:00	2:46:00		Foodgen	30.11.17	00:00

Go To:
[Home](#)
[Parked](#)
[Show Tool Tip](#)
[Show Inquiries of Historical Resources](#)
[Show Resource Chart](#)
[Link](#)
[Print](#)
[Refreshed on 2018-07-07 10:07:17](#)

[Manufacturing Order](#)
[Resource](#)
[Resource Planning Board](#)

Food park

FC01  
FC01

FCL01  
FCL01

FLL01  
FLL01

FP01  
FP01

FPC01  
FPC01

FS01  
FS01

Doc Number	Item Code	Order Quantity	Resource Quantity	Status	Duration	Begin	Finish	Link
17762	strawberry jam 2000	1	80.00	80.00	Started	19:20m	19:20m	<a href="#">Press task</a> <a href="#">Link MCR</a>
6:28:52.26								
17769	strawberry jam 2000	1	100.00	100.00	Started	19:20m	19:20m	<a href="#">Press task</a> <a href="#">Link MCR</a>
1:16:18.17								
17757	strawberry jam 2000	1	200.00	200.00	Scheduled	20:50m	20:50m	<a href="#">Press task</a> <a href="#">Link MCR</a>
3:17:29.08								
17759	strawberry jam 2000	1	220.00	220.00	Scheduled	45:50m	45:50m	<a href="#">Press task</a> <a href="#">Link MCR</a>
5:08:13.08								
17761	strawberry jam 2000	1	100.00	100.00	Scheduled	70:00m	70:00m	<a href="#">Press task</a> <a href="#">Link MCR</a>
8:09:17								

FCL011  
7h 10m  
On 12m

Date From: 26.06.2018
Date To: 10.07.2018

Resource: 263h-45m  
Occupied: 7h 59m  
Free: 255h-45m  
Overloaded: 0h 0m

DocNumber: 17761  
Item Code: strawberry jam 2000  
Operation Code: cooling  
Required Date: 6/28/2017  
Planned Quantity: 100.00

# MANUFACTURING ORDERS

CompuTec ProcessForce's Manufacturing Order gives you meticulous control over planning, executing and recording production activities and provide you with the tools you need to make sure your factory is running efficiently and you meet the delivery dates you have promised.

- Order dependent recipes and routings
  - Modify product structures and production processes to manage everyday changes in production
- Backwards and forwards scheduling
  - Plan production start and end dates
  - Accurate lead time calculation
  - Strategic order prioritization
- Wide-range of document creation options
  - Issue to Production
  - Receipt from Production
  - Stock Transfer documents
- Register co-products as they are manufactured
- Comprehensive usable and technological scrap management tools
- Control document workflow and task progress using the CompuTec ProcessForce relationship map
- Create large Manufacturing Orders based on multiple Sales Orders
- Manage and optimize warehouse movements
  - Check availability of materials and component parts
  - Receive alerts when shortages occur
  - Gain insights into picking and receiving processes
- Subcontracting management features:
  - Define your suppliers and specify the scope of their service
  - Generate Purchase Requests or Purchase Orders for services
  - Procurement and material reports
- Record worktime – enhanced functionality when used in conjunction with CompuTec PDC (Plant Data Capture)
- Set up quality control testing rules according to customer requirements
- Oversee the relationships between all the operations associated with a particular manufacturing order
- Use the operation bind to ensure the correct materials are issued to each operation
- Initiate orderless production
  - Use statistical data and projections to plan production
  - Spread out production evenly to avoid bottlenecks and backlogs
  - Track cost details throughout the entire process







# BATCH CONTROL

With the help of CompuTec ProcessForce's batch management functions, you'll be able to track exactly who you bought inventory from, who you sold it to and everything that happened to it in-between making your life easier in terms of quality control, efficiency of workflow and customer relations.

- Batch consumption management
- Batch distribution management
- Access detailed data about each and every batch at the click of a button
- Batch transaction reports to trace all batch related documents and transactions

## Expanded Batch Master Data

CompuTec ProcessForce's Batch Master Data keeps records of all the respective data your business needs.

- Date details e.g. admission, manufacture, expiry and inspection dates
- Properties e.g. physical or chemical definitions and nutritional information
- Quality control data
- Returns and complaints associated with each batch
- Custom fields to serve your business needs
- Set up batch templates to simplify and speed up batch creation

## Batch and Serial Number management

Fully customizable batch and serial number generation tools mean that you can build the exact serial and batch numbers that you want in whatever format you want. You can use any information in your SAP Business One database, your own-predefined codes and system generated numbers and changing your set-up takes just a few minutes.

## Shelf -Life management

- Optimize your picking methods
- Limit spoilage and deterioration of perishable goods
- Avoid costly returns and spoiled stock

Expiry dates play a huge role in consumer purchase decisions. By tightening up your shelf-life management procedures the retailers that you supply will have more lead time on the expiration dates of your products, helping them in turn to shift more product and most importantly boost your sales orders.

- Manage each batch on a FIFO, FEFO or FMFO basis
- Color coded expiry date warning system
- Customizable system alerts
- Advanced expiry date calculation engine
- Integrate minimum guaranteed shelf-life agreements into your system





# BATCH TRACEABILITY

While inventory transparency is mandatory in almost every industry these days, entering and maintaining this kind of data manually is time-consuming and prone to errors. Using the CompuTec ProcessForce end-to-end Batch Traceability features, you can trace any batch throughout its entire lifecycle from its arrival at your production facility, through the production process to the final goods delivery to your customer with speed and accuracy to keep up with the demands of even the most heavily regulated industries.

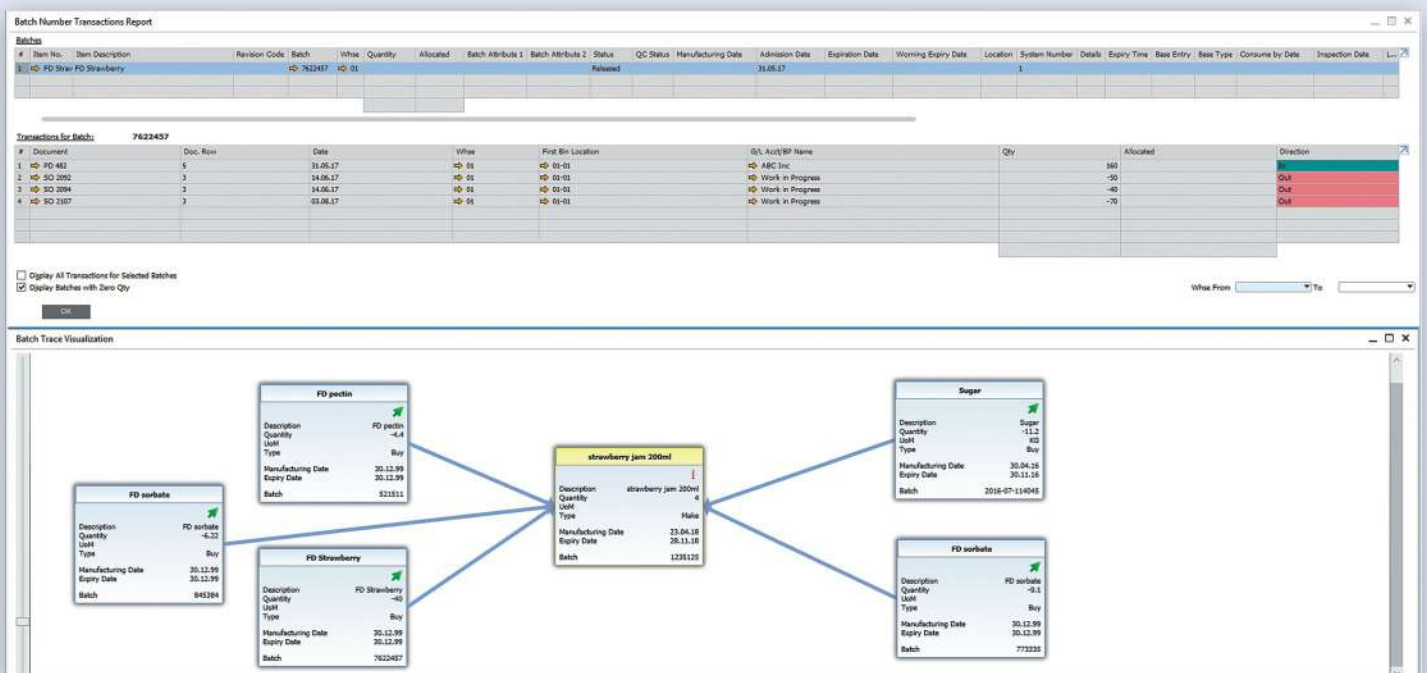
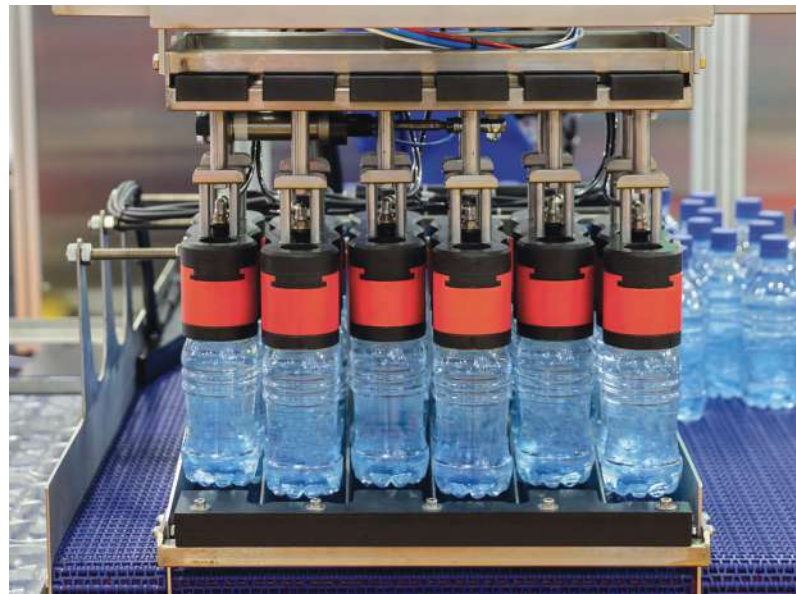
- Withdraw inventory from the supply chain with ease
- Follow up complaints efficiently
- Monitor and trace allergens and hazardous materials
- Pinpoint the root cause of quality control issues
- Identify your best and worst suppliers
- Gain control over final product quality
- Support product aftercare, upgrade customer service and issue warranties with confidence

## Batch Genealogy Trees

- Visualize your inventory's journey from start to finish
- Use any stage of the product lifecycle as a starting point
- Full batch history
- View complex product relationships

*In order to ensure compliance with industry regulations and standards, our inventory needs to be fully traceable at any given moment and the bigger we get, the more complex that becomes. CompuTec ProcessForce has taken the hassle out of that whole process and eliminated that particular barrier to our company's growth.*

*Jaymie Crook,  
Bosco and Roxy's, Canada*



# END-TO-END QUALITY MANAGEMENT

Today consumers are more demanding than ever before. There is no space for mistakes in today's fast-paced market which is why we designed CompuTec ProcessForce to provide a robust infrastructure for Quality Control at every stage of production, from the moment the goods arrive in your facility to the moment the final product is loaded onto the delivery vehicle.

## Quality Control throughout the entire product life cycle

- In-bound testing upon receipt to the warehouse including Delivery Vehicle Inspection
- In-process testing during each phase of the production cycle
- Inventory testing including batch re-testing and other pre-dispatch checks

## Quality Control Management tools

- Use business events, customizable triggers and SAP Business One Alert functions to advise users that a Quality Control Test is required to be performed.
- Automatic Quality Control test form generation on user-defined transactions and Manufacturing Order status changes
- Manage tests individually or in test pools (perform the same test on multiple samples)
- Test creation wizard which ensures no test gets missed
- View existing Quality Control tests by Manufacturing Order
- Define resources and tools to be used for testing and monitor consumption of materials used for Quality Control testing
- Specify even very complex testing rules and procedures as well as testing frequency
- Stipulate additional requirements and manage them using User-Defined Fields
- Designate Quality Control inspectors according to specialization, warehouse or accreditation

## Customizable test result management

- Define test properties and defects
- Record multiple test results for each Quality Control test
- Assign test property and defect codes
- Manage batch or serial number status throughout the Quality Control process
- Group test results
- Track frequency of specific quality control passes and fails for reporting and analysis purposes

## Fully integrated Compliance Management

according to the regulations of the FDA, EFSA, FSANZ, ECHA, EPA or any other regulatory body.

## Generate Non-Conforming Materials Reports

- Record additional data about test failures
- Initiate action plans to remedy or determine the cause of failed Quality Control tests

## Certificate of Analysis

- Confirms that each product meets all regulations and requirements
- Fully customizable according to each customer's needs
- Send Certificate of Analysis to your customers automatically



## WHAT

Test and Item Properties to be tested

## WHEN

The frequency of testing

## WHERE

The transaction the test will be performed on

## WITH

The resources and items that are used within the testing process

Test Protocol

Code: Bot\_tst1  
Item Code: Plastic Bottle AN  
Item Name: Plastic Bottle AN  
UoM: pcs  
Revision Code: code00  
QC Warehouse Cc: 01  
QC Bn Code: 01-01  
Project: Cage01  
Used Count: 1

Name: Bottst  
Template Code: 01  
Template Name: Intra Testing  
Group Name: Standard Products  
Valid from: 27.03.17  
Valid to: 28.03.23  
Create Date: 23.11.18  
Update Date: 23.11.18

#	Item Property Code	Item Property Name	Expression	Value from	Value to	UoM	Reference Code	Reference Name	Remarks
1	06	Appearance	Equals	1.000	2.000				
2	07	Colour	Between	0.000	1.000		02	Red	
3	12	Grade	Equals	1.000	2.000		15	A	
4	18	Length	Between	120.000	124.000	mm			
5	13	Weight	Between	35.000	37.000	G/m			
6	15	Width	Between	55.000	60.000	mm			
7				0.000	0.000				

Update Cancel

17.01.19 16:28 SAP Business One

Quality Control Test

Test Protocol No.: Bot\_tst1  
Description: bottst  
Item Code: Plastic Bottle AN  
Item Name: Plastic Bottle AN  
Item UoM: pcs  
Revision Code: code00  
QC Warehouse Cc: 01  
QC Bn Code: 01-01  
Complaint No.:  
Project: Cage01  
Sample Id: 34114141  
Used Count: 1

Series: Primary 438  
QC Pool No.:  
Inspector: Mark Jones  
Electronic Signatu: Created  
Status: Created  
Created Date: 17.01.19  
Started Date: 17.01.19  
On-Hold Date:  
Waiting WCHR Dat:  
Closed Date:  
Test Status: To Be Determined  
Pass/Fail Date:

#	Item Property Code	Item Property Name	Expression	Value from	Value to	UoM	Tested Value	Reference Code	Reference Name	Tested Reference Code	Tested Reference Name	Pass/Fail	Reason Code
1	06	Appearance	Equals	1.000	2.000		1.000	06	Oily			Pass	
2	07	Colour	Between	0.000	1.000		1.000	02	Red			Pass	
3	12	Grade	Equals	1.000	2.000		1.500	15	A			Pass	
4	18	Length	Between	120.000	124.000	mm	0.000					Fail	
5	13	Weight	Between	35.000	37.000	G/m	0.000					Fail	
6	15	Width	Between	55.000	60.000	mm	0.000					Fail	
7				0.000	0.000		0.000						

Add Cancel

You Can Also

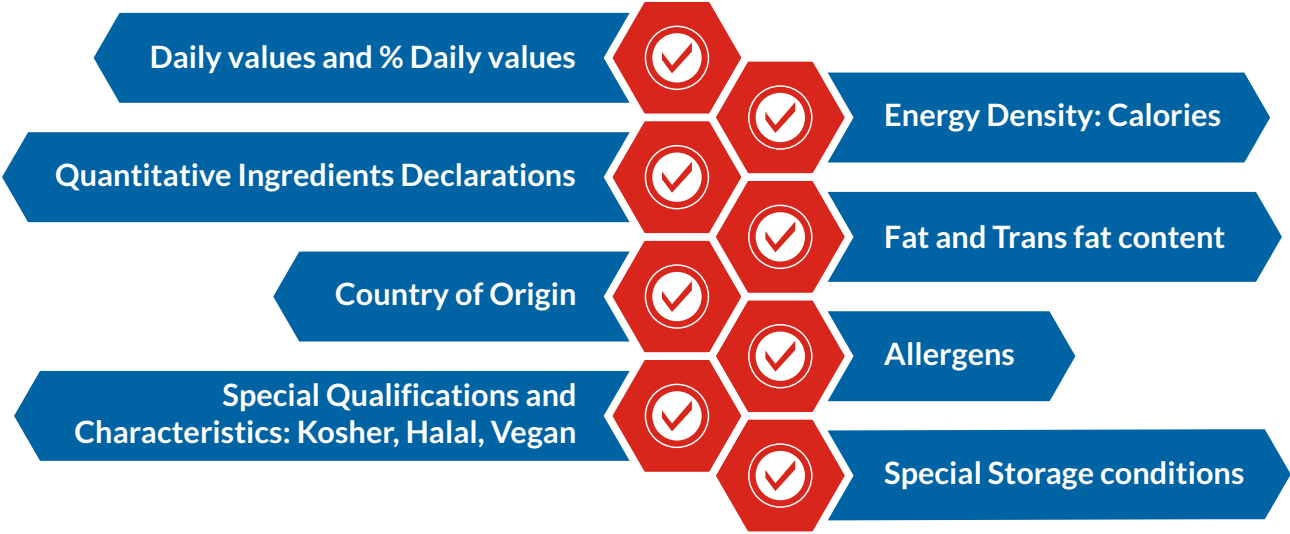
The incredibly useful scheduling module, extensive quality control management features and improved structure for the production process are all highly praised by our customers.

Halim Madid  
Innov Business Services, France & Tunisia



# INGREDIENTS CALCULATION AND DECLARATION

To avoid the dire consequences of incorrectly and insufficiently labelled products in regulated industries, CompuTec ProcessForce makes sure you know exactly what is in each of your final products and you can declare ingredients with confidence and accuracy.



CompuTec ProcessForce is the only solution on the market that offers the detailed functionalities required by the food and beverage industry whilst being both a solution that is native to SAP Business One and easy to implement and use.

Lindsay Pointon  
Signum Solutions, United Kingdom

- Calculate nutrients, allergens and contaminants on any item, formula or Bill of Materials
- Base calculations on default sample sizes, serving sizes or containers
- Integrate adherence to regulatory standards into your production processes
- Assign codes in accordance with regulations
- Define alternative code – common, scientific or Codex Alimentarius INS or EAU numbers
- Make factual health and nutritional claims

**Additional features for CompuTec Labels users:**

- Install templates for rapid data entry and label creation
- Customizable product labeling e.g. free-from labeling such as GM Free, Sugar Free, Dairy Free, Gluten Free etc.

Nutrition Facts	
8 servings per container	
<b>Serving size</b>	<b>2/3 cup (55g)</b>
<b>Amount per serving</b>	
<b>Calories</b>	<b>230</b>
<b>% Daily Value*</b>	
<b>Total Fat</b> 8g	<b>10%</b>
Saturated Fat 1g	<b>5%</b>
Trans Fat 0g	
<b>Cholesterol</b> 0mg	<b>0%</b>
<b>Sodium</b> 160mg	<b>7%</b>
<b>Total Carbohydrate</b> 37g	<b>13%</b>
Dietary Fiber 4g	<b>14%</b>
Total Sugars 12g	
Includes 10g Added Sugars	<b>20%</b>
<b>Protein</b> 3g	
Vitamin D 2mcg	10%
Calcium 260mg	20%
Iron 8mg	45%
Potassium 235mg	6%
<small>* The % Daily Value (DV) tells you how much a nutrient in a serving of food contributes to a daily diet 2,000 calories a day is used for general nutrition advice.</small>	

# COMPLAINT MANAGEMENT

Regardless of whether the complaint has originated from a customer, a vendor or even internally, CompuTec ProcessForce's complaint management functions provide a framework to ensure each and every issue is handled correctly and the appropriate remedial action is taken in every case.

- Track the progress of returns and samples from customers and suppliers
- Manage the entire lifecycle of complaints
- Trace batches and serial numbers associated with complaints
- Record complaint type, code and action taken
- Trigger quality control tests and product recalls
- Customizable system alerts to ensure swift response times

Designed to give complete transparency over your complaint procedures, CompuTec ProcessForce allows you to manage your complaints using complaint codes, status, date, batch or serial numbers. You can attach notes and images to each complaint or link them to quality control tests. You'll receive alerts, be able to create reports and if necessary instigate hassle-free product recall procedures.

Because all CompuTec ProcessForce users in your enterprise will have access to up-to-date, detailed information about complaints and their current status, all your employees will have the tools to be more responsive. This is particularly advantageous for maintaining excellence in your warehousing practices.





# DYNAMIC PRODUCT COSTING

CompuTec ProcessForce features a dynamic costing enhancement to SAP Business One which means complex calculations such as enterprise-wide cost-roll ups can be carried out in a fraction of the time it would otherwise take.

- Measure financial performance
- Customizable in-depth multi-level product costing
- Dynamic in-memory cost calculations for unprecedented speed
- Multi-structure fixed and variable overhead costs management
- Automatic currency conversion to your working currency

## Resource costing

- Machinery – allocate costs to each phase in the machine's operational cycle
- Labor
- Subcontracting

## Item costing

- Wide range of cost presentation methods
- Record and calculate coproducts and scrap
- Define costs on a warehouse-by-warehouse basis
- Divide overheads either by value or percentage

## Cost Rollups

- Even extremely large and complex roll-ups can be completed in a matter of minutes
- Material costs and processing costs
- Customizable calculation methods

## Manage multiple cost categories for "what-if" simulations and analysis

- Compare current and future costs
- See how improvement projects and price changes will impact production and analyze the potential for savings
- Implement your preferred cost category at the click of a button
- Automatic inventory reevaluation when you select your preferred cost category

## Wide range of cost allocation and cost calculation methods based on SAP Business One Item Master Data

- Standard Costing – for items with static costs
- Moving average – for items with volatile costs
- FIFO – for perishable goods
- Batch / Serial Number – when costs for each batch or item purchased tends to vary

## Costed Bill of Materials

- Check how different suppliers, components or ingredients, machinery, labor and subcontractors will affect the cost of your final product
- Unlimited simultaneous product revisions to help you evaluate the best production materials and methods
- An invaluable tool in negotiating terms and pricing with potential customers and evaluating risk

## Production costing analysis – planned vs. actual

- Compare forecasted and real financial performance for each Manufacturing Order
- Analyze production costs and take corrective actions where applicable

## Costing reports

- Costing Variance Report
- Production Efficiency Report





**Resource Costing**

Resource Code: 100  
Resource Name: cutting

Cost Category: 001

#	Cost Type	Hourly Rate	Fixed O/H	Fixed O/H %	Value	Other	Sub-Total	Variable O/H	Variable O/H %	Value	Other	Sub-Total	Total	Remarks
1	Queue Time	2.000	3.000	0.000	0.000	1.000	4.000	2.000	0.000	0.000	0.000	2.000	8.000	
2	Setup Time	1.000	2.000	0.000	0.000	2.000	4.000	3.000	0.000	0.000	0.000	3.000	8.000	
3	Run Time	2.000	5.000	0.000	0.000	3.000	8.000	1.000	0.000	0.000	0.000	1.000	11.000	
4	Stock Time	1.000	5.000	0.000	0.000	0.000	5.000	0.000	0.000	0.000	0.000	0.000	6.000	

Update Cancel

**Item Costing**

Item Code: strawberry jam 200ml  
Item Name: strawberry jam 200ml

Revision Code: code00  
Cost Category: 001  
MRP Type: Make

Valuation Method: Serial/Batch  
UoM: Batch Size  
Batch Size: 1.000

#	Warehouse	Type	Price List	Item Cost	Fixed O/H	O/H %	Value	Other	Sub-Total	Variable O/H	O/H %	Value	Other	Sub-Total	Total	Remarks
1	01	Automat		7.408	3.000	10.000	0.741	0.000	3.741	2.000	10.000	0.741	0.000	2.741	13.889	
2	02	Automat		7.408	3.000	10.000	0.741	0.000	3.741	2.000	10.000	0.741	0.000	2.741	13.889	
3	03	Automat		7.408	3.000	10.000	0.741	0.000	3.741	2.000	10.000	0.741	0.000	2.741	13.889	
4	04	Automat		7.408	3.000	10.000	0.741	0.000	3.741	2.000	10.000	0.741	0.000	2.741	13.889	
5	FR01	Automat		7.408	3.000	10.000	0.741	0.000	3.741	2.000	10.000	0.741	0.000	2.741	13.889	
6	Prod	Automat		7.408	3.000	10.000	0.741	0.000	3.741	2.000	10.000	0.741	0.000	2.741	13.889	
7	Sub Con	Automat		7.408	3.000	10.000	0.741	0.000	3.741	2.000	10.000	0.741	0.000	2.741	13.889	

OK Cancel Update Costing

**Costed Bill of Materials**

Item Code: Product03-Std  
Item Name: Product03-Std  
Revision: default  
Warehouse: General Warehouse  
Batch Size: 100.000  
Routing: Routing01

Cost Category: Standard cost

Dynamic calculations: ☒  
Static calculations: ☐  
Use real raw materials costs: ☐  
Use the Final-Good batch size for: ☐  
Use own coproducts costs for: ☐  
Use own scrap costs for calculation: ☐

#	Type	Item ...	Item ...	Revisor	Ware...	Quan...	ATL Ma	ATL Res	ATL ...	ATL ...	LL Mat	LL Res	LL Fix...	LL Va...	LL T...	CA Mat	CA Res	CA FL...	CA V...	CA T...	TC Mat	TC Res	TC FL...	TC V...	TC T...
1	Final Good - Product																								
2	Semi Good - Product																								
3	Semi Good - Product																								
4	Raw Mat																								
5	Raw Mat																								
6	Raw Mat																								
7	Raw Mat																								
8	Coproduct																								
9	Scrap																								
10	Routing																								
11	Operation																								
12	Resource																								
13	Details																								
14	Details																								
15	Details																								
16	Details																								
17	Raw Mat																								
18	Routing																								
19	Operation																								
20	Resource																								
21	Details																								
22	Details																								
23	Details																								
24	Details																								
25	Routing																								
26	Operation																								

OK Cancel Refresh Expand All Collapse All

# MATERIAL RESOURCE PLANNING

## Finding the balance between supply and demand

CompuTec ProcessForce's Material Resource Planning (MRP) functionality orchestrates the flow of components, ingredients and parts throughout your organization.

- Optimize MRP by means of true data integrity  
Up-to-date, error-free data will allow you to plan manufacturing activities, delivery schedules and purchasing activities, offer recommendations and generate real-time reports
- Run MRP for default product revisions
- Forecast the flow of inventory
- Receive system recommendations about material reserves
- Ensure availability of materials for production and of final goods for shipping
- Maintain minimal stock levels to free up capital and reduce warehousing costs while still preventing shortages
- Shorten lead times and enhance productivity
- Promise accurate lead times to your customers and increase customer satisfaction

## REPORTING AND ANALYTICS

CompuTec ProcessForce draws on your data and calculations to generate a wide range of cost and production efficiency reports. With this information at your fingertips you can ensure your production processes are optimized from start to finish and your machine park is operating at maximum efficiency.

- Real-time analytics for fast, data-driven decision making
- Compare and analyze current and historical performance to determine areas for improvement and take action
- Drill down key data to get the level of detail you need
- Choice of Reporting Tools: User Queries, SAP Crystal Reports, Semantic Layer, KPI and Dashboards widgets, Excel Reports and Interactive Analysis, SAP Analytics Cloud
- Set up automated triggers for report creation and email reports to the appropriate recipients
- Identify the causes of downtime and other areas for improvement and decide on the best investment strategies to improve efficiency in your production process.

### Manufacturing Order Reports

- Compare the planned and actual costs of the entire production process for each order
- Break down costs into material and resource costs and compare planned vs. actual values
- Review current resource status along with its planned and current workflow

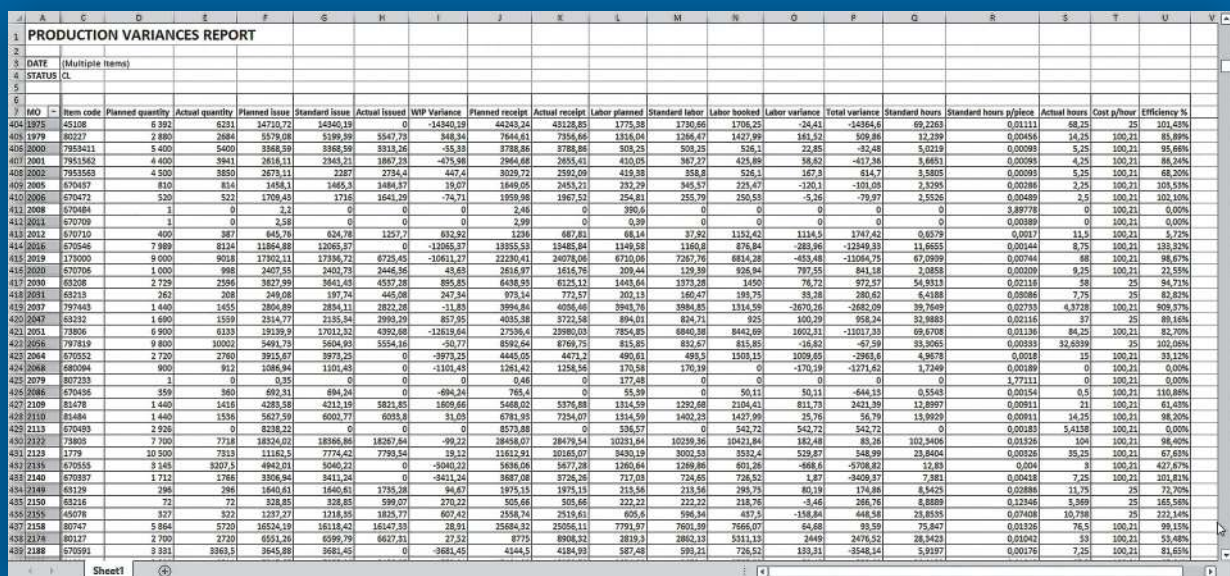
**Supplier Scorecard** – evaluate suppliers' performance based on information about quality, quantity accuracy and punctuality of deliveries.

**Non-Conforming Materials Report** – report non-conforming material identified during Quality Control procedures or inventory movements.

**Certificate of Analysis (CoA)** – confirm the compliance of regulated products.

CompuTec ProcessForce data can be used with all SAP HANA reporting and analytics capabilities to create a wide variety of other reports depending on your needs.





Manufacturing Order Resource - Overview

## BESPOKE EXTENSIONS

All CompuTec ProcessForce customers have access to CompuTec AppEngine, an OData v4 application programming interface. This opens up infinite possibilities.

- Aids integrations with machinery and other IT solutions based on HTTP protocols
- Develop or commission your own custom CompuTec ProcessForce extensions and plugins with HTML based user interfaces
- Ideal for very niche businesses with extremely specialized requirements

## OTHER COMPUTEC SOLUTIONS

#CompuTec  
**PDC**

An extension for CompuTec ProcessForce to record real manufacturing operations timings and communicate easily and effectively with the staff on the shop floor.

#CompuTec  
**WMS**

A logistics solution to manage your warehousing processes from handheld devices and optimize how they support your production processes.

#CompuTec  
**Labels**

A label printing management solution which ensures your inventory is labelled accurately and exactly according to your particular business needs.



An official **CompuTec** partner

**Signum Solutions North**

The Innovation Centre  
Sci-Tech Daresbury  
Keckwick Lane, Daresbury  
Cheshire WA4 4FS

**Signum Solutions Midlands**

Regus house  
Herald Way  
Pegasus Business Park  
Castle Donnington  
Derby DE74 2TZ

Tel: 01244676900

Email: [enquiries@signum-solutions.co.uk](mailto:enquiries@signum-solutions.co.uk)  
[www.signum-solutions.co.uk](http://www.signum-solutions.co.uk)

Signum Solutions is an award winning, fully accredited SAP Business One Gold partner and has worked exclusively with the SAP Business One product since it was first released in the UK in 2003. We support clients in a range of sectors including food supply and service, chemicals and costings wholesale and manufacturing and our aim is to deliver a complete solution that meets both the broad needs of your business and the unique requirements of your industry.