

PDC

Signum
SOLUTIONS



CONTROL PRODUCTION RESOURCES IN REAL TIME

CompuTec PDC – an application complementary to CompuTec ProcessForce is designed to connect the shopfloor to the office by using touchscreen technology. The base function of CompuTec PDC is to record time of work on a specific Operation within a specific Manufacturing Order but expanded functionalities allows to record a lot more of production process information.

MAJOR BENEFITS



REPORT REAL RUNTIME OF LABOR AND USED RESOURCES

Thanks to CompuTec PDC you can manage production materials, control Pick Orders and Pick Receipts.



EFFECTIVELY MANAGE PRODUCTION RESOURCES

Supervise the status of the production order. Make real-time corrective actions for maintaining production streamline. Your enterprise has an insight into the whole machine park or a single resource. Additionally, you can check the resource status (set-up time, run time, downtime).

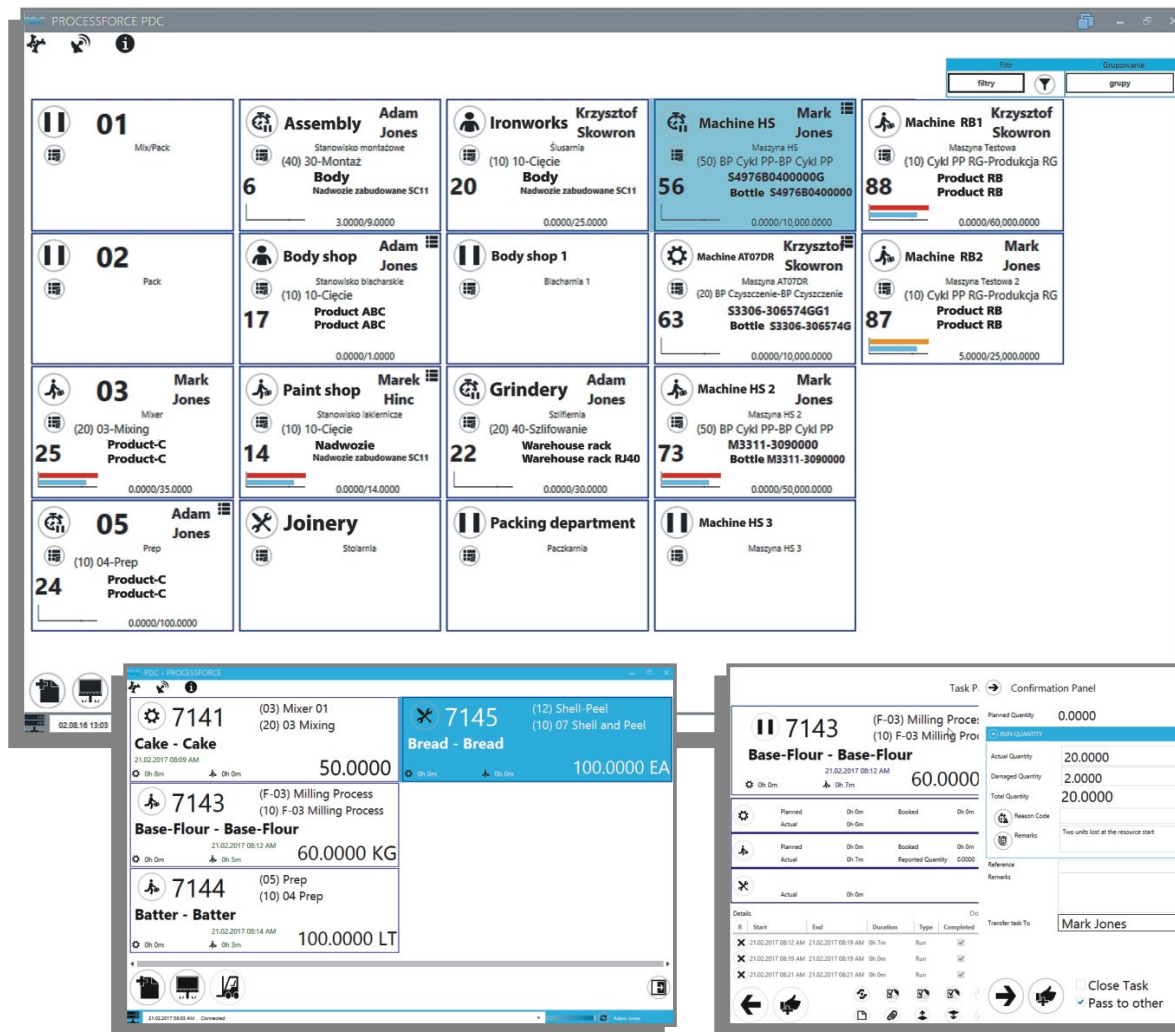


CONTROL AND REGISTER DOWNTIME

CompuTec PDC has a feature enabling notifications in downtime situations which can be displayed by the person responsible for machine planning and maintenance. This solution eliminates the risk of additional costs.

FUNCTIONALITIES

- Recording different kinds of Manufacturing Order times: set up, run and downtime
- Production Issue and Receipt – allows to record production issue and receipt of Items used in production process
- Team Log in – team leader can choose Employees that are to be assigned to the task
- Activity – creation of activity (standard SAP Business One option) connected to a specific task
- A wide range of information connected to Manufacturing Order:
 - Input/Output Properties – this additional data describe the process of production, e.g. input viscosity and output viscosity (allows to record planned, real values and differences between two of these)
 - Operation Properties – describes properties for the operation, for example consumables (allows to collect real values against planned ones)
 - Resource Properties – additional data related to the resource, for example machine set-up details (allows to collect real values against planned ones)
 - Item Details – additional information on production Items, e.g. color (allows to collect real values against planned ones)
 - Tools Properties – properties of tools connected to Resources (allows to collect real values against planned ones)
 - Bill of Materials preview – displays a Bill of Materials connected to the chosen Manufacturing Order in default printing layout set up for a specific SAP Business One user
 - Manufacturing Order preview – displays Manufacturing Order in default printing layout set up for a specific SAP Business One user
 - Attachments – files connected to the Manufacturing Order, e.g. additional documents, images.
- Two level data access – standard (for Employees) and Manager (e.g. for team leaders to manage other employees tasks)
- Extended customization options – possibility to select information to be displayed on an Operation tile.



The product is also supported by the printing management tool dedicated for templates reports and labels, called CompuTec Labels. CompuTec Labels as printer manager lets you easily handle prints that can be edited in Crystal Reports, Zebra and Bixenon. Using this tool, you can assign different templates to designated printers, at any time. We can freely combine the requester (SAP, PDC, WMS) with operation and assign a template depending on the user, item code, item group, warehouse code.