



**CONNECTING  
SHOP FLOOR  
IN REAL-TIME**



**PRODUCE**

Production order processing

**A lean Production Order Processing application for manufacturing companies using SAP Business One who want to increase the work performance on the shop floor.**

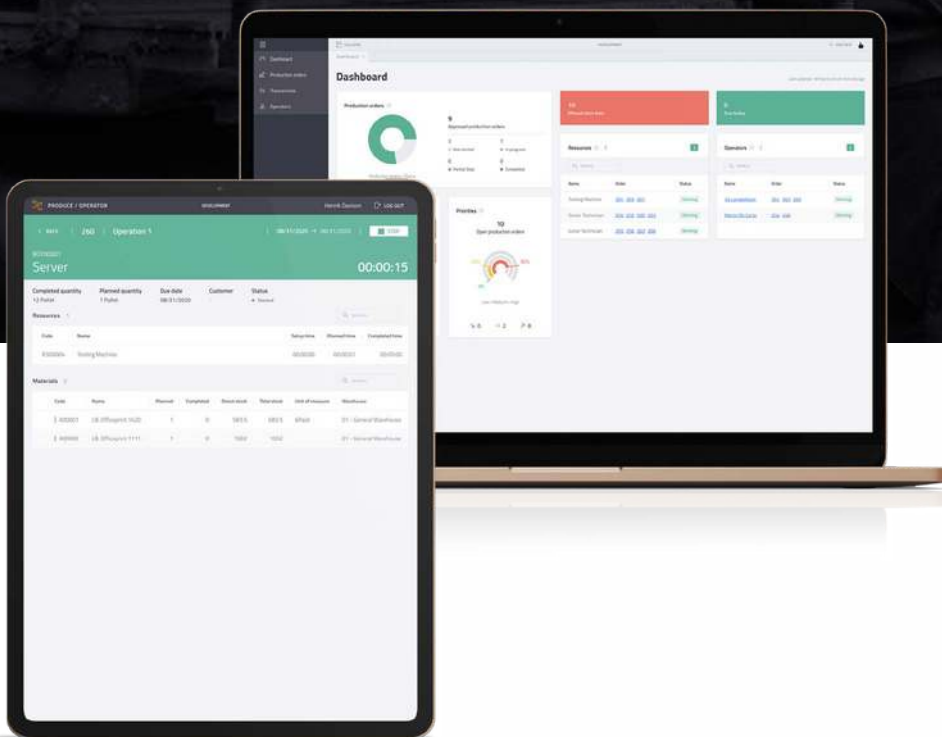


## PRODUCE

Production order processing

### PRODUCTION ORDER PROCESSING

Produce helps to **manage and execute** production orders by providing real-time communication to shop floor manager and operator, **increasing work performance on the shop floor.**



# Key Issue

---

Shop floor management is **often not supported** by ERP systems. The product backlog is communicated manually from planning to production, and there is no communication flow between shop floor managers and operators.

Late information about incoming materials or the status of work steps affects subsequent processes. A lack of visibility of production-relevant information for operators and missing feedback of the processing department to the shop floor manager slows down decision-making, which impacts both subsequent processes and delivery dates.

For a shop floor manager and production team to work together effectively, it is an absolute necessity to work with a solution that provides real-time information.

**Focused on specific business roles, their problems, and needs, Produce supports the communication between shop floor managers and processing departments, providing real-time information to manage and execute production orders.**

A comprehensive backlog management system that helps the shop floor manager organize and prioritize production orders and supports operators through paperless access in executing operations and collecting production data.

Produce helps to get a clear overview of approved work stages, enabling both the execution of time and material transactions and the reporting of finished products.



**"PRODUCE ALLOWS US AN ORGANIZATION TO DRASTICALLY REDUCE THE AMOUNT OF PAPER WE USE, WHILST ACCURATELY RECORDING THE PRODUCTION TIMES, SO WE CAN SEE IN REAL-TIME WHAT IS HAPPENING IN PRODUCTION."**

**"Produce is saving us 30% of administration and production manager time per week, as orders are input by employees on the shop floor!"**

**Nicole Morrell, Head of Finance & Digitalisation, Bio-D**

# Shop floor **manager**

---



"With my current ERP-system, I am missing real-time communication with the shop floor operators, which leads to time lag and outdated data on the processing status of production orders. I use Produce to organize production orders, and track work in progress in real-time."

*John, Shop Floor Manager*

## **JOBS SOLVED BY PRODUCE MANAGER**

### **Organize** and prioritize production order backlog

Comprehensive production order backlog and production progress view. Assignment and adjustment of priorities both automatically and manually.

### **Provide** production orders for the shop floor

Quick access to material requirements. Simple selection and release of the next production orders for shop floor employees.

### **Monitor** production progress

Full visibility on real-time shop floor activities e.g which operator is working on what production order and resource.



**PRODUCE**

Production order processing

# Shop floor operator

---



“As an operator on the shop floor, I have a lot of paperwork, as time and materials are manually recorded on printed production orders. Changes to production orders are not visible as new printouts are required. I use Produce to start and stop operations and collect time and material requirements in an efficient way.”

*Sam, Shop Floor Operator*

## **JOBS SOLVED BY PRODUCE OPERATOR**

### **Select and execute production orders**

Get a clear, paperless overview of the work your shop floor manager has prepared for you. Select the next production order and get an overview of required materials, resources, and production instructions. Start the next operation step, record time and materials usage. Report finished production quantities and complete the processing.

Produce Operator enables to start and stop operations efficiently while gathering time and material requirements with minimum effort. It allows the paperless collection of production data, and displays work stages for released production orders, complete with real-time information relating to the availability of materials and resources, on the terminal.

Produce is built up of **2 separate applications** that helps shop floor manager and operators to work seamlessly **together**.

## MANAGER

Organize production orders, and track progress in real-time.

### Production approval

Provide production orders for shop floor operators.



### Production order backlog management

Manage production orders, check material availability, assignment and adjustment of priorities.



### Monitor production progress

Track production progress in real-time and monitor transactions.



## OPERATOR

View production orders, and register work done and material usage.

### Production order backlog

Get an overview of work stages for released production orders.



### Production information

Receive information about required materials and resources.



### Production data collection

Start and stop operations, collect time and material requirements and report finished goods.



## KEY BENEFITS



### Keep the overview

Prioritize your production orders to control the sequence and visibility on the shop floor terminal.



### Paperless Production

Access instructions, material and resource requirements and collect your production data paperless.



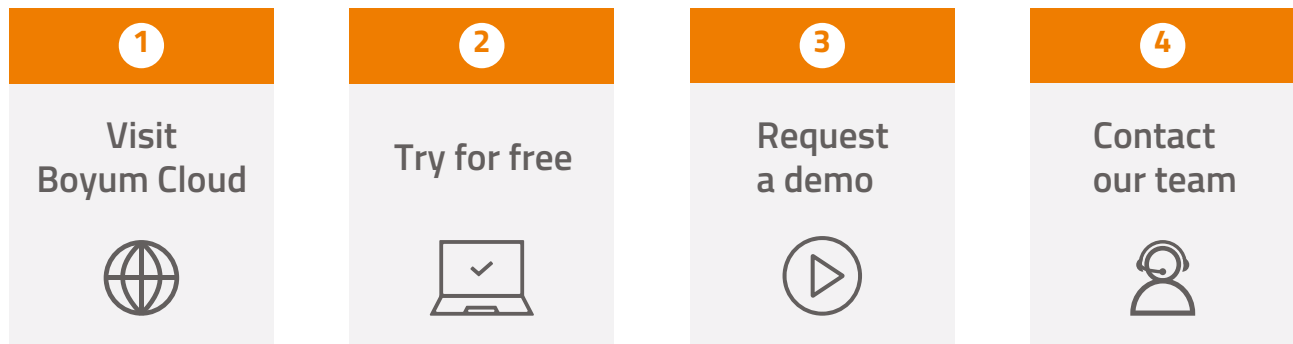
### Real-time tracking

Monitor production progresses, check time and material costs, and complete the production order.



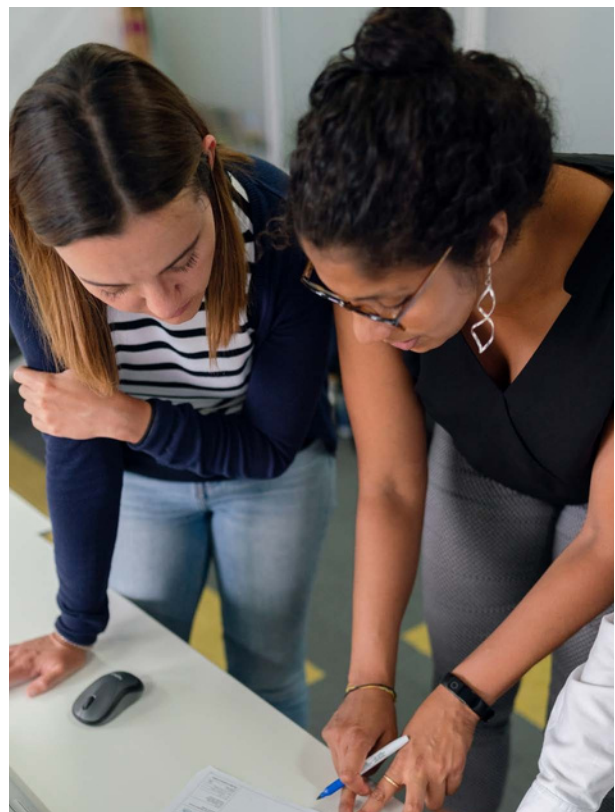
# Role-based cloud applications that **fit to your** needs

Intelligent solutions for specific business roles give your employees the tools that they really need, enabling them to get more out of their work than ever before. By understanding each different role and the problems they face, and then adapting the interface with this in mind, users can work in a way that fits their process perfectly. Boyum Cloud offers solutions for different business roles, so if you want your product development and production teams to work effectively alongside your quality department, take advantage of our role-based solutions and move your business up a level.



## KEY REASONS TO USE

- ★ **Increased work performance with** out-of-the-box solutions for specific business roles.
- ★ **Less complexity and a fast-learning** curve through easy-to-use functions and self-explanatory user interface .
- ★ **Faster provision of the services** through effortless and hassle-free implementation and minimal support
- ★ **Flexible subscription model**  
3-month entry point and simple pricing for evolving businesses.





# Industry **leading** solution provider




---


Boyum IT Solutions is today the global leading software solution provider in the SAP Business One ecosystem and have received more than 20 SAP awards. Among these are the SAP Global Solution of the Year Award and People's Choice Award, which we received for the last 4 years.

We have the largest partner and customer ecosystems, with a presence in 115 countries and just over 9,000 customers and 200,000 users.



## Signum Solutions

 01244 676 900  
 [info@signum-solutions.co.uk](mailto:info@signum-solutions.co.uk)  
 [signum-solutions.co.uk](http://signum-solutions.co.uk)

 The Innovation Centre  
Sci-Tech Daresbury  
Daresbury  
WA4 4FS